



SAGE PFW

LABELING

ENSURES ACCURACY

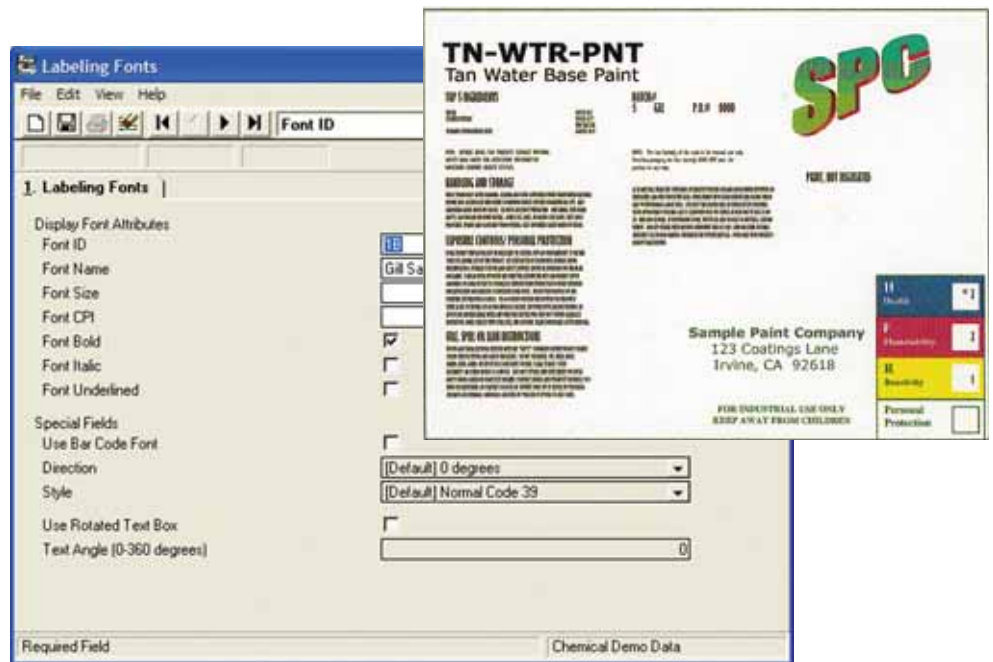
The Sage PFW Labeling module ensures that you never have to worry about the accuracy of hazardous information or warnings you print on labels. Since the labeling module integrates with other Sage PFW modules, your labels are dynamically created, always using the most current information.

SAVES TIME

With tight integration there is no need for time-consuming data entry replication. As you update formulas all other Sage PFW modules are automatically updated.

SAVES MONEY

With the Labeling module, there is no need for pre-printing labels. You have the ability to customize label's size and content, including the addition of images, text, material information, and more.



As the industry's only integrated process manufacturing and financial software from a single source, Sage PFW ERP is equipped with everything you need to improve your operations and streamline workflow. More than 800 process manufacturers use this robust software to solve many of the same problems you're facing today—including labeling.

The Sage PFW Labeling module, part of a comprehensive series of solutions, automates the entire labeling process, including shipping, product, receipt, finished goods, and drum labels. By integrating this module with the core Sage PFW product, you will no longer have to manually edit and enter information into a separate labeling product. The software collects current information from other areas within Sage PFW and automatically populates labels with the appropriate data. As a result, you can save valuable time and eliminate duplicate data entry.

In addition, the Labeling module provides maximum flexibility in terms of formatting, graphics, and content. You can print labels vertically or horizontally, use a variety of fonts and colors, add customer graphics, logos and boxes, and even print barcodes.

For more information about Sage PFW and realizing a higher level of performance and profitability, please contact your local business partner, or call us directly toll free at 888-473-5135. You may also contact us via e-mail at sagepfwinfo@sage.com and visit our Web site at: www.sagesoftware.com



Sage PFW

Labeling

"Sage PFW runs our entire enterprise. It's impossible to quantify the savings and efficiencies we've achieved by implementing it."

Larry Modene, MIS Manager
Halben Food Manufacturing Company, Inc.

FEATURES

Flexible Format

Labels can be printed sideways if desired, and many can be printed horizontally and vertically.

Flexible Content

The Labeling module provides total control over the content of each label, including reportable materials, physical properties, and standardized blocks of text.

- Formula physical properties are automatically calculated and can be printed anywhere on a label.
- Custom calculations from the Laboratory module can also be printed on labels if the Laboratory module is installed.
- Warnings or other standard text that you have defined as boilerplates can be printed anywhere on a label.

Automatic Updating

Labels that you print will always reflect the most current information, since their actual content is based on data pulled directly from the Formulas, Production, and/or Inventory Pro modules. The data that actually prints on a label, such as reportable quantities, is calculated "on-the-fly" each time the labels are printed.

Graphics and Fonts

Label text may be printed in a variety of type sizes and fonts. In addition, you can customize your labels with graphic images, lines, boxes, or even your company logo. The images can be added in a variety of supported file formats, including: BMP,WMF, EMF, GIF, JPG, ICO, and FLE. Text can also be printed as various types of bar codes.

Copying

You can also copy an existing label template and use the template to quickly create similar labels. This feature can save you significant time by eliminating the need to create each label from scratch.

Keywords

The Labeling module contains a set of keywords associated with values from Sage PFW databases. Using these keywords when you design a template allows you to easily include these values in the label.

